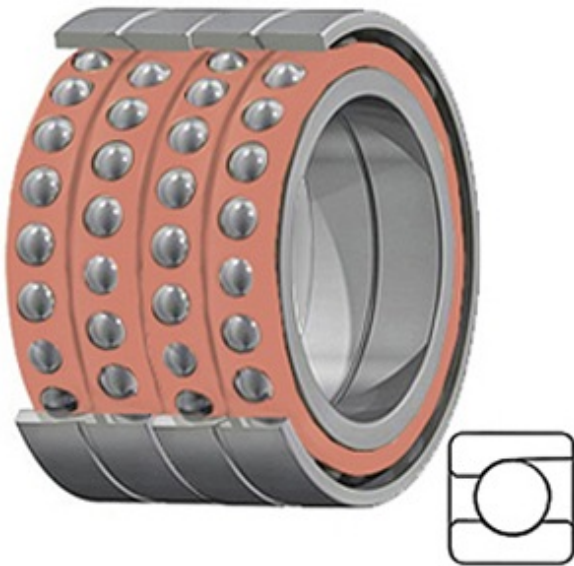




BEARING-SINGAPORE (PTE)LTD.



2MM9301WI QUH Bearing 2D drawings and 3D CAD models

0.472 Inch | 12 Millimeter x 0.945 Inch | 24 Millimeter x 0.945 Inch | 24 Millimeter TIMKEN 2MM9301WI QUH Precision Ball Bearings

Bearing No. 2MM9301WI QUH

Category	Precision Ball Bearings
Inventory	0.0
Manufacturer Name	TIMKEN
Minimum Buy Quantity	N/A
Weight	0.054
EAN	0087796322257
Product Group	B04270
Enclosure	Open
Precision Class	ABEC 7 ISO P4
Material - Ball	Steel
Number of Bearings	4 (1 Quadruplex Set)
Contact Angle	15 Degree
Preload	Heavy
Raceway Style	1 Rib Outer Ring
Cage Material	Phenolic
Rolling Element	Ball Bearing
Mounting Arrangement	Quadruplex-Universal
Flush Ground	Yes
Inch - Metric	Metric
Other Features	Single Row Angular Contact Super High Precision
Long Description	12MM Bore; 24MM Outside Diameter; 24MM Width; Open Enclosure; ABEC 7 ISO P4 Precision;



BEARING-SINGAPORE (PTE)LTD.

	Steel Ball Material; 4 (1 Quadruplex Set) Bearings; 15 Degree Contact Angle; Phenolic Cage Material; 1 Rib Oute
Category	Precision Ball Bearings
UNSPSC	31171531
Harmonized Tariff Code	8482.10.50.28
Noun	Bearing
Keyword String	Angular Contact Ball
Manufacturer URL	http://www.timken.com
Manufacturer Item Number	2MM9301WI QUH
Weight / LBS	0.12
d	0.472 Inch 12 Millimeter
B	0.945 Inch 24 Millimeter
D	0.945 Inch 24 Millimeter