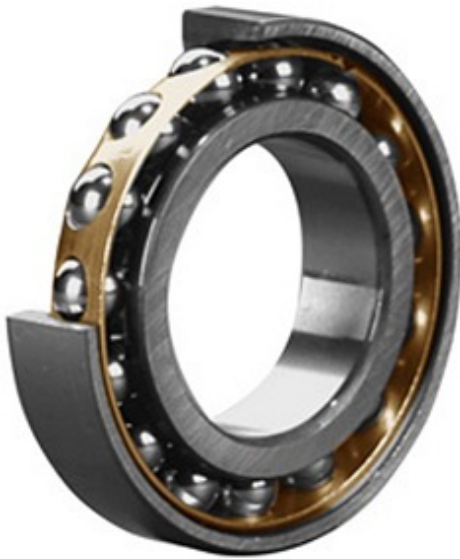




BEARING-SINGAPORE (PTE)LTD.



7248 BMG Bearing 2D drawings and 3D CAD models

9.449 Inch | 240 Millimeter x 17.323 Inch | 440
Millimeter x 2.835 Inch | 72 Millimeter
CONSOLIDATED BEARING 7248 BMG
Angular Contact Ball Bearings

Bearing No. 7248 BMG

Category	Angular Contact Ball Bearings
Inventory	0.0
Manufacturer Name	CONSOLIDATED BEARING
Minimum Buy Quantity	N/A
Weight	46.76
EAN	0644075151849
Product Group	B00308
Enclosure	Open
Flush Ground	Yes
Rolling Element	Ball Bearing
Number of Rows of Balls	Single Row
Precision Class	ABEC 1 ISO P0
Maximum Capacity / Filling Slot	No
Snap Ring	No
Cage Material	Bronze
Contact Angle	40 Degree
Internal Clearance	C0-Medium
Number of Bearings	1 (Single)
Mounting Arrangement	Universal
Inch - Metric	Metric
Long Description	240MM Bore; 440MM Outside Diameter; 72MM



BEARING-SINGAPORE (PTE)LTD.

	Width; Open; Yes Flush Ground; Ball Bearing; Single Row of Balls; ABEC 1 ISO P0; No Filling Slot; No Snap Ring
Category	Angular Contact Ball Bearing
UNSPSC	31171531
Harmonized Tariff Code	8482.10.50.28
Noun	Bearing
Keyword String	Angular Contact
Manufacturer URL	http://www.consbrgs.com
Weight / LBS	102.999
d	9.449 Inch 240 Millimeter
B	2.835 Inch 72 Millimeter
D	17.323 Inch 440 Millimeter